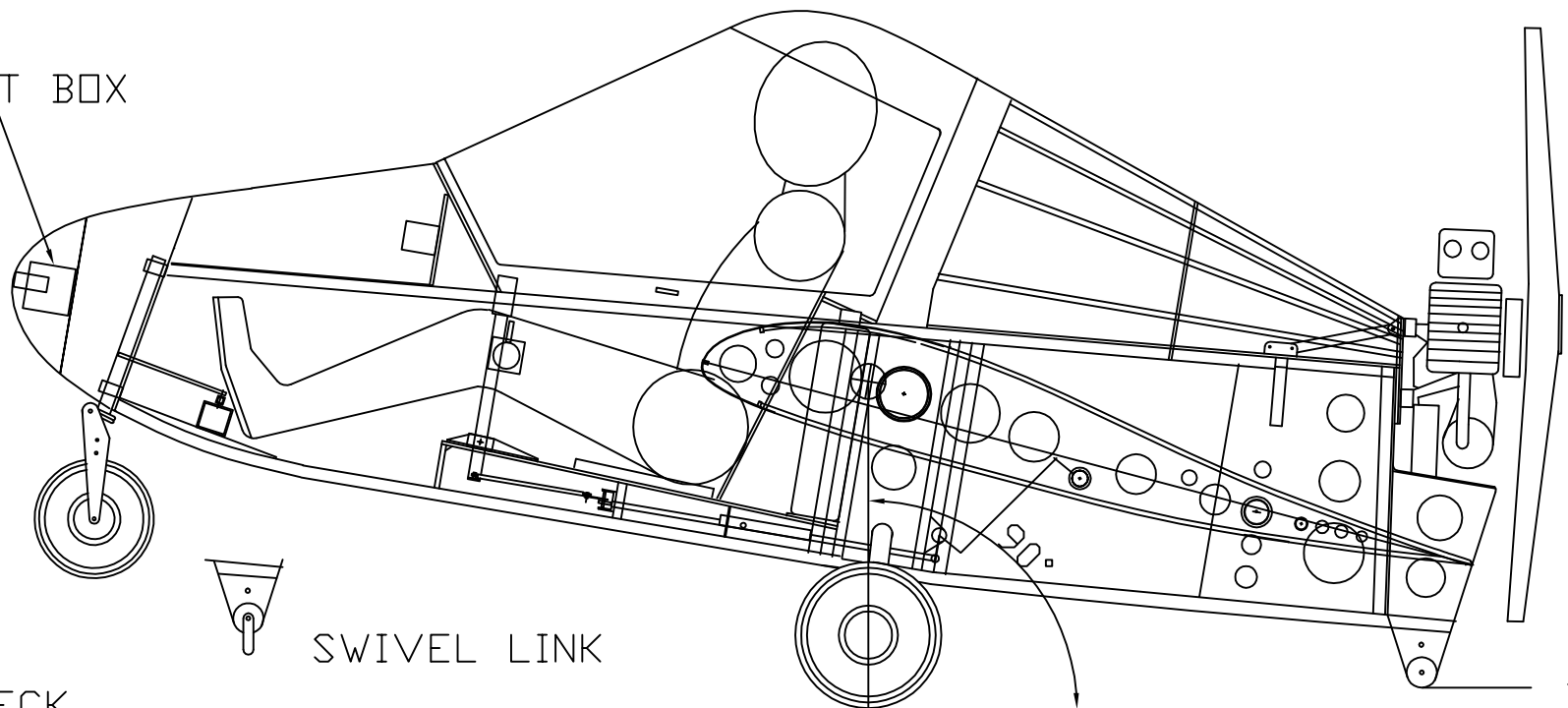


A

WEIGHT BOX



SWIVEL LINK

LEVEL GROUND

X

CG CHECK

- 1 SIT AN AVERAGE WEIGHT PILOT IN SEAT
- 2 WEIGH A/C AND CALCULATE CG LOCATION
- 3 ADD LEAD WEIGHT AT NOSE UNTIL CG IS AT 20% WING CHORD FROM LE
- 4 ROTATE AIRCRAFT UNTIL IT BALANCES ON ITS MAIN WHEELS THE 20% CG IS NOW DIRECTLY ABOVE THE MAIN WHEEL AXLE. MEASURE DISTANCE X
- 5 FOR OTHER PILOT WEIGHTS ROTATE A/C AND BOLT WEIGHTS AT THE HOLES IN NOSE LEG OR TAIL SKID UNTIL THE AIRCRAFT BALANCES AND THE TAILSKID IS DIMENSION X FROM THE FLOOR
- 7 WEIGHT BOX IS A SMALL BEAN TIN FILLED WITH MOLTEN LEAD INSERT IN FOAM NOSE AND FG ACROSS BACK TO SECURE
- 8 BALANCE WEIGHTS CAN ALSO OR ALTERNATIVELY BE BOLTED TO THE FRONT BULKHEAD SEE PIC 72
- 9 A SWIVEL LINK PLATE OF LENGTH X COULD BE FITTED TO THE TAIL SKID AS A GUIDE

MW9B-3